



www.uson.com

**Uson L.P.**  
8640 N. Eldridge Parkway  
Houston, TX 77041  
USA  
Phone: +1-281-671-2000  
Fax: +1-281-671-2001  
www.uson.com

**Detroit Office**  
31471 Utica Road  
Fraser, MI 48026  
USA  
Phone: +1-248-589-3100  
Fax: +1-248-589-3103

**Uson China**  
Room 601, 567 Lan Gao Road  
Shanghai, 200333  
P.R. China  
Main: 021-583 65859  
021-583 59187  
Fax: 021-583 59185  
021-337 73559  
www.uson.com.cn

**Uson Ltd.**  
Western Way  
Bury St. Edmunds  
Suffolk, IP33 3SP  
United Kingdom  
Phone: +44-1284-760606  
Fax: +44-1284-763049

SPRINT<sup>MD</sup> SPECIFICATIONS

|                          |   |
|--------------------------|---|
| MODEL(S)                 | Sprint <sup>MD</sup> (Type-S, Type-C)   |
| DESCRIPTION              | Multi-function, configurable leak and flow tester   |
| ENCLOSURE DIMENSIONS     | Compact size: 10.5" (H) x 10" (W) x 12" (D)   |
| WEIGHT                   | 15 to 22 lbs, configuration dependent   |
| PNEUMATICS               | Integral and highly configurable  |
| TEST PORTS               | Standard: NPT, BSP (other interfaces available by request), Front or Rear   |
| COUPLE PORTS             | 2 or 4, 3-way pneumatic couple ports available  |
| LEAK MEASUREMENT         | Calculated flow or delta pressure   |
| PRESSURE RANGE           | Vacuum to 150 psi (10 bar)  |
| REGULATOR TYPE           | Manual or Electronic  |
| ACCURACY (PRESSURE)      | 0.25 TO 0.50%FS (pressure range dependent)  |
| PRESSURE RESOLUTION      | 24-bit ADC for high-resolution pressure measurement   |
| FLOW RANGE               | Up to 20 liters per minute  |
| ACCURACY (FLOW)          | 1.0% Full Scale   |
| TESTS                    | Pressure Decay; Sealed Component; Volume Verification; Inter-Lumen Decay; Vacuum Decay; Occlusion; Back-Pressure; Seal Creep; Burst; Crack; Fast Flush Device |
| CONFIGURATIONS AND PORTS | Concurrent: 2, 4 Channels<br>Sequential: 1, 2, 3, 4 Channels  |
| DISPLAY                  | Large 8.5" color touch screen LCD with a rich dashboard-style user interface  |
| PLATFORM                 | High-speed, quad-core CPU with reliable solid-state memory  |
| LANGUAGES                | Standard: English, Spanish, & Chinese. Other languages are available upon request   |
| NO. OF PROGRAMS          | 127   |
| UNITS                    | User-selectable from a selection of flow and pressure units of measurement  |
| DATA COLLECTION          | USB/Ethernet/RS-232   |
| PRINTER SUPPORT          | Local Printer Support   |
| SOFTWARE FEATURES        | Local authentication, audit logs, test setup, statistics, real-time data, self-test diagnostics   |
| DIGITAL I/O              | 16 Programmable Inputs/Outputs  |
| DISCRETE PLC INTERFACE   | BCD Program Selection, Start, Abort   |
| FIELDBUS                 | Standard: Modbus RTU<br>Expanded: Ethernet/IP, Profinet, Profibus, other protocols supported by request   |
| COMMUNICATION            | USB, Ethernet, RS 232, and Barcode support  |
| POWER SUPPLY             | 24 VDC from 90 to 264 VAC 47 to 63 Hz supply (auto sensing, multi-voltage power supply)   |
| CERTIFICATIONS           | FCC, CE, RoHS II Compliant  |
| CALIBRATION              | NIST Traceable, ISO 17025 available   |
| OPTIONS                  | Remote Start/Stop Button, Leak Master, Barcode, Footswitch, IQ/OQ Templates   |

Due to a program of continuous development, specifications may be changed without notice.



Multi-Function Leak and Flow Tester





# Sprint<sup>MD</sup>

Designed to deliver fast, reliable, and accurate information when and where you need it, so you can stay in control of your process

Uson

Pioneer of Modern Leak and Flow Testing



for good measure

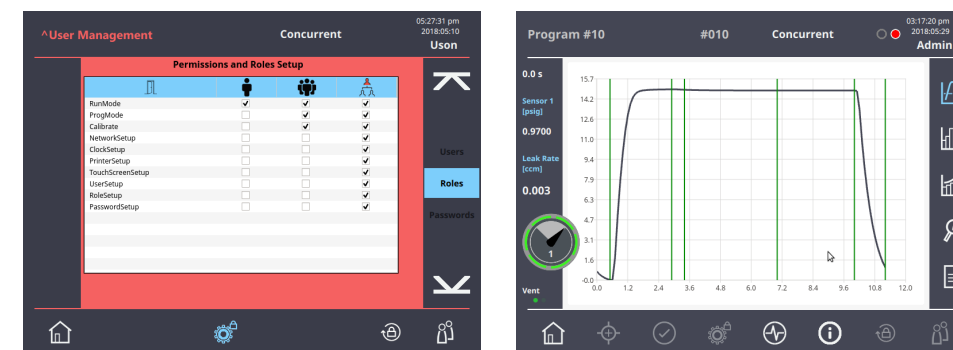
At Uson, we work closely with our customers to understand their unique and changing needs. We combine this insight with the knowledge of cutting-edge technologies to predict the future needs of our customers and their industries.

Uson's experienced and knowledgeable engineers ensure each customer receives increased testing speed, sensitivity, and repeatability. As a pioneer of automated leak testing equipment for medical devices, the automotive, pharmaceutical and medical packaging industries, and others, Uson has more experience in these specialized fields than any other company in the world.

With the largest installed base of leak testers in the medical device industry, Uson builds leak testers and accessories to exacting standards demanded by the world's leading manufacturers. This unrivaled experience and expertise is complemented by global sales and support.

Count on us for quality products and after-sales care.

The Sprint<sup>MD</sup> delivers consistent results to help users optimize their process.



The reimagined touchscreen provides access to a wide range of data. From statistics like pass, fail, minimum, maximum, and standard deviations, to historical graphs and charts, the Sprint<sup>MD</sup> provides a deep level of information, making it easy to monitor the process.

## USER EXPERIENCE

### Designed With Your Entire Team in Mind

A wide range of multifunctional testing, including both integrity and performances tests, is available to reduce training, ease technology adoption, and simplify maintenance

Fast cycle time and simple programming facilitates maximum production throughput and accommodates complex testing requirements

Self diagnostics provide valuable information about the health of your tester

## SECURITY

### Security Features to Meet Industry Compliance Requirements

User authentication provided through individual passwords and roles

Authorization to access levels is customizable by user or role within the application, tester, or network file system

Ability to log and monitor changes to parameters enables compliance with standards such as 21 CFR Part 11 (U.S.), MHRA/EU Annex 11, and others

## CONNECTIVITY

### Information at Your Fingertips to Stay in Control of Your Process

Refined analytics allow users to identify historical trends that reveal process degradation and reduce transcription errors common with manual tracking

Data collection, archiving, and reporting make it easier to handle changes and retrieve data to support quality systems and manage processes

Embedded fieldbus and expanded digital I/O offer easy control and selection of programs

## QUALITY & PERFORMANCE

### Continuing to Meet the Highest Standards for Leak and Flow Testing

Performance and repeatability are achieved through a redesigned block manifold and low-wattage valves that minimize the chance of leaks, improve field-time repeatability and sensitivity, and reduce dead volume

Upgrade-friendly and service-friendly design, with the versatility to accommodate a wide range of testing and analysis, with up to four channels concurrently

Request a free Feasibility Study for your application at <http://www.uson.com/contact-us/>

Bring your most challenging application, and we'll take a look!